

# Nfina 9524R-V Backup Appliance



powered by  
**VEEAM**



## FEATURES:

- 2U rack-mount Veeam Backup Appliance
- 2 x 5th Gen Intel Xeon Silver 4509Y Processors
- 128GB RAM
- 24 x 2.5" hot-swap SSDs
- 2 x 500GB boot drives
- Up to 153.6TB usable storage
  - Add JBOD or JBOF for storage expansion
- Choose Windows Server 2022, or Windows 11 Pro OS
- Veeam Backup & Replication Enterprise Plus Platform
- Veeam Backup Licensing
  - Per VM
  - Per Agent (Server or Workstation)
  - Per M365 user
  - BYOL allowed
- Cloud Connect available
- Veeam ONE Monitoring and Analytics available
- Veeam Recovery Orchestration available
- Nfina configuration supports ~160 concurrent backup jobs

The Nfina 9524R-V Veeam Backup Appliance provides ransomware protection, immutable storage, and instant recovery.

The 9524R-V is an integrated backup and disaster recovery appliance with pre-configured hardware and Veeam Backup & Replication Enterprise Plus software. The 9524R-V comes in a variety of storage capacity sizes. Custom configurations are available upon request.

Veeam Backup & Replication software ensures the protection of your data by creating copies and storing them securely. These backups are taken in the form of an immutable snapshot, allowing for easy restoration to a previous safe state if needed. Restoration can occur on a single file, folder, or entire system level. The software also uses advanced algorithms to maximize storage efficiency through data compression and deduplication. Additionally, automated backup scheduling and offsite replication provide added protection against failures. In case of any issues, Veeam allows for quick recovery within seconds.

With an intuitive interface, users can easily monitor their backups and perform restores as necessary. Designed to be user-friendly and powerful, Veeam is a top choice for businesses of all sizes seeking to safeguard their vital data.

Customers can backup locally to the 9524R-V and then asynchronously replicate those backups to Nfina's Cloud Connect location/s. Customers can access, monitor, and manage their backups using our Cloud Connect web UI, or if they prefer, Nfina can manage the appliance. Management agents can be installed on the 9512R-V, and we can manage the backup and DR appliance from our cloud portal. A VPN connection is not required.

**HYPERCONVERGED  
SAN STORAGE  
HYBRID CLOUD  
CLOUD HOSTING  
BACKUP & RAPID DR**

***nfina***

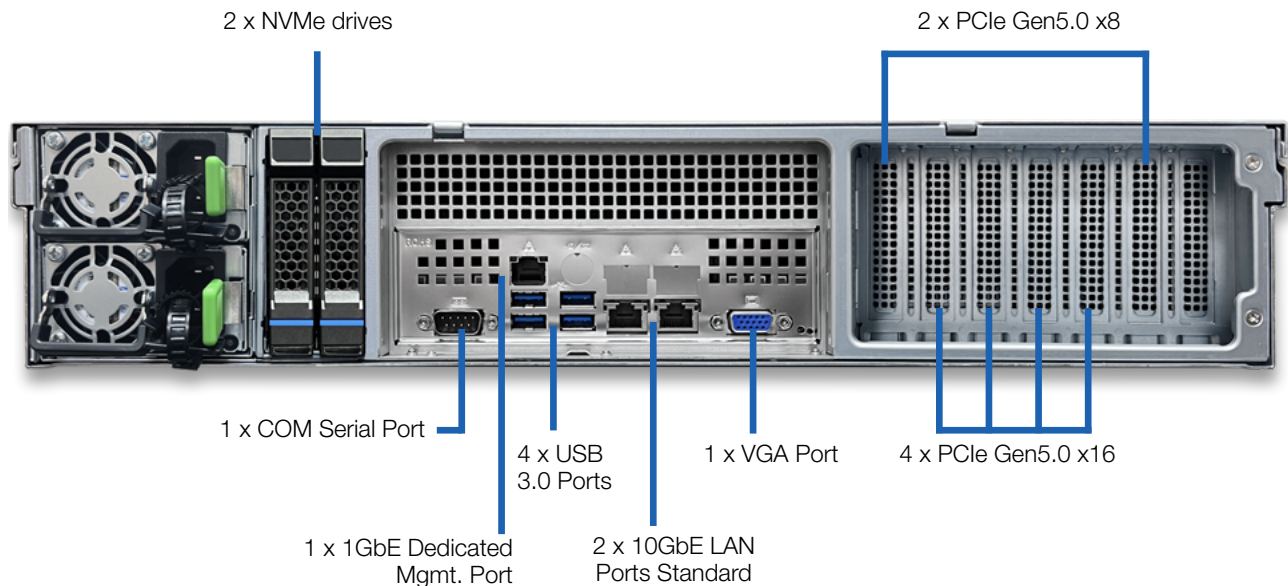
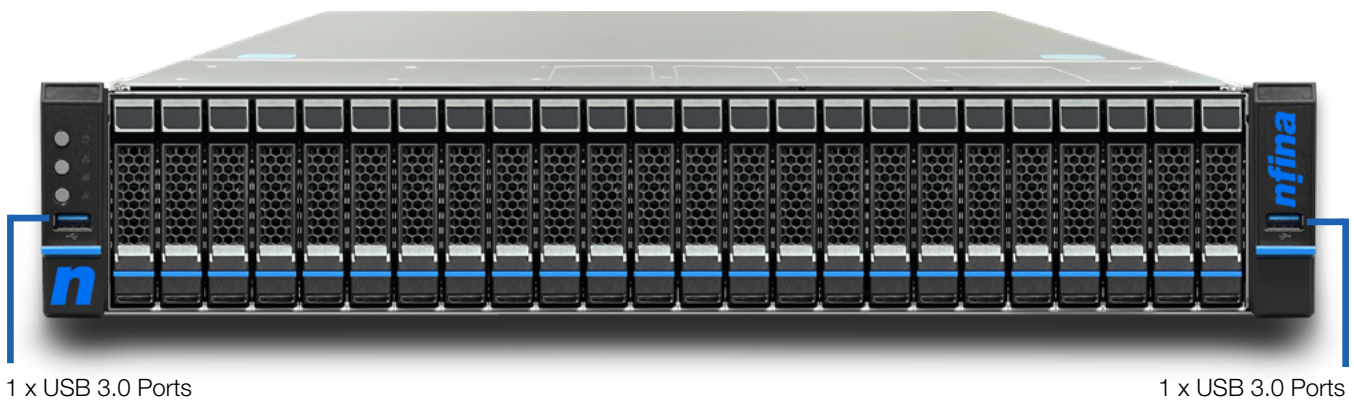
# NFINA 9524R-V Backup Appliance

SPECIFICATIONS	
Form Factor	2U rack-mount, 3.43" x 17.24" x 25.93"
Operating Temperature	10°C to 35°C (50°F to 95°F)
Processors	2 x 5th Generation Intel® Xeon® Silver 4509Y Scalable Processors 8 cores, 2.6GHz to 4.1GHz, 22.5MB cache, 125W TDP per processor
Socket	Dual Socket E (LGA-4677)
Memory	8 x 16GB DDR5 5600MHz ECC RDIMM (128GB RAM total)
Boot Drives	2 x 500GB M.2 NVMe SSD, VROC - RAID 1
Storage	24 x 2.5" SATA SSD hot-swap drives Choose from: 960GB, 1.92TB, 3.84TB, 7.68TB drives
Usable Storage	19.2TB, 38.4TB, 76.8TB, 153.6TB (drive dependant)
Storage Expansion	Available with Nfina 12 or 24 bay JBOD or 32 bay JBOF models
RAID Controller	1 x 9560-8i MegaRAID w/ CacheVault, 12GB/s, 4GB cache
HW RAID Data Protection	RAID 60
Power Supplies	2 x hot-swap 800W AC, 100-240V AC
Out of Band Management (OOB)	BMC, IPMI 2.0, KVM over HTML5, and Redfish API
OS Options	Microsoft® Windows Server® 2022 or Microsoft® Windows 11 Pro
Backup Data Platform	Veeam® Backup & Replication Enterprise Plus - Immutable snapshots, taken at a frequency and kept for a length of time set by user - Point-in-time recovery to a clean, malware-free, restore point within seconds - Zero-Trust architecture prevents accidental or malicious deletion, or encryption of data - AI-powered, built-in malware detection and YARA content analysis avoids reinfection
Veeam® Backup Licensing	Per VM, Agent (Server or Workstation), or Microsoft 365 user, BYOL allowed
Veeam Platform Options	Veeam ONE™ Monitoring and Analytics Veeam Recovery Orchestration
Cloud Backup/Replication	Veeam Cloud Connect backup hosted in Nfina-Cloud
Nfina Backup/DR Management	Nfina manages your backup appliance, pricing based on workload
Workloads Protected	VMware and HyperV virtual machines Windows, Linux, Mac OS physical servers or workstations Microsoft 365 (Exchange, SharePoint, Teams, OneDrive) AWS, Azure, Google Cloud, Nfina-Cloud backups Salesforce
Concurrent Backup	Nfina configuration supports ~160 concurrent backup jobs
Regulatory Certifications	CE, UL 62328, FCC part 15 (US)
Warranty	5 years

# NFINA 9524R-V Backup Appliance

## SPECIFICATIONS

I/O	6 x USB 3.0 ports (2 front, 4 rear) 1 x COM Serial port (rear)
Display	1 x VGA ports (rear)
Ethernet	2 x 10GbE LAN (100/1000/10000) standard 25GbE, 40GbE, 100GbE, & Fibre Channel ports available 1 x 1GbE (Dedicated management port) included
PCIe® Slots	4 x PCIe® Gen5 x16 FL/FH 2 x PCIe® Gen5 x8 HL/FL



# OTHER NFINA VEEAM SOLUTIONS

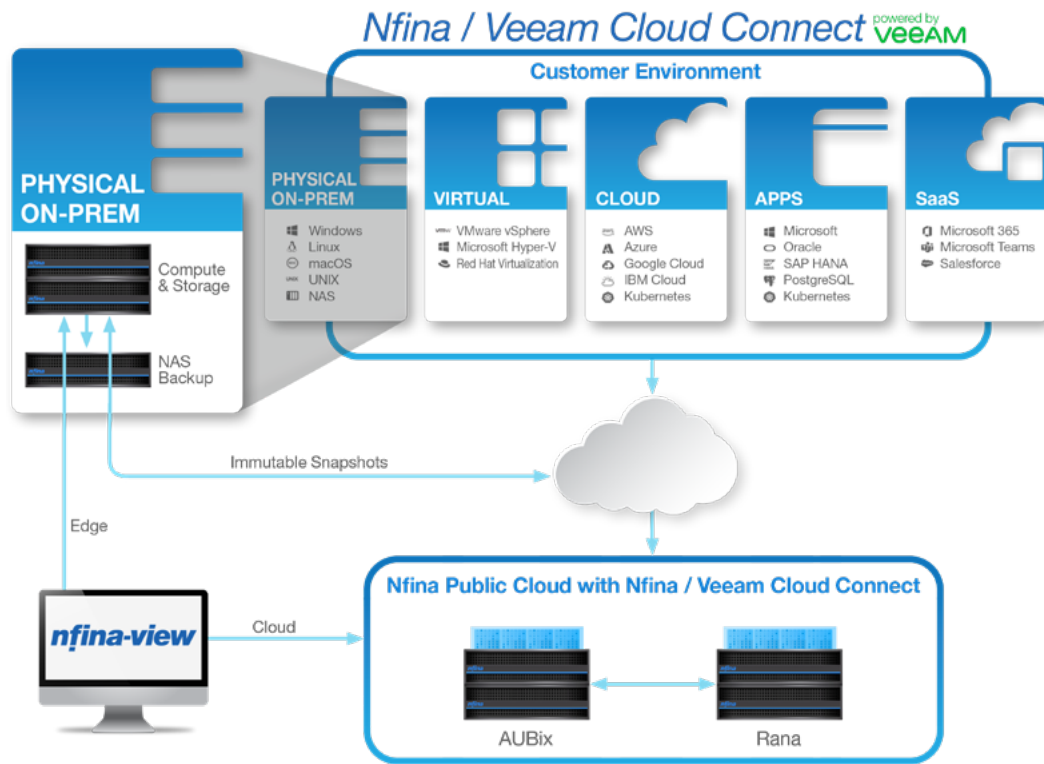
## REPOSITORY SOLUTIONS

### 9424R NAS

9424R NAS serves as a high-performance, hardened Veeam repository for compute and storage servers and hypervisors. With this 24-bay NAS, Standalone Veeam Repository, can replicate backups, VM copies, and metadata to this secondary level of immutability. In the event of a primary device failure, the system would restore data from the backup NAS. Veeam Cloud Connect can be also be used to backup data to the Nfina Public Cloud.

### 9242R SAN

The 9424R SAN is a dual node, 48-bay, hardened Veeam repository. This scale-out backup repository enhances the performance and capacity of the distributed file system by allowing you to copy your backups for redundancy and offload older restore points. With 4-way mirroring this SAN delivers the highest level of immutable storage. Veeam Cloud Connect can be also be used to backup data to the Nfina Public Cloud.



© 2024 Nfina Technologies, Inc. All rights reserved. Intel® and XEON® are registered trademarks of Intel Corporation. Other trademarks and trade names that may be used in this document are owned by their respective companies. Nfina believes the information in this document is accurate as of its publication date. The information is subject to change without notice. The contents of this document are provided as-is, without any express or implied warranties of any kind.

Rev. 070124



**Address:** 820 S. University Blvd. Suite 4E, Mobile, AL 36609

**Email:** sales@nfina.com

**Telephone:** 251.243.0043

**Website:** www.nfina.com